

# **Introduction to Windows XP**

## **Appendix C: Set Windows XP to Classic Mode**

### Classic Mode

You can set the appearance of WindowsXP so that windows and buttons look more like the ones in Windows 98. You may or may not want to change the setting on your own personal computer. The Windows XP settings look like the ones in Figures C.1 and C 2.

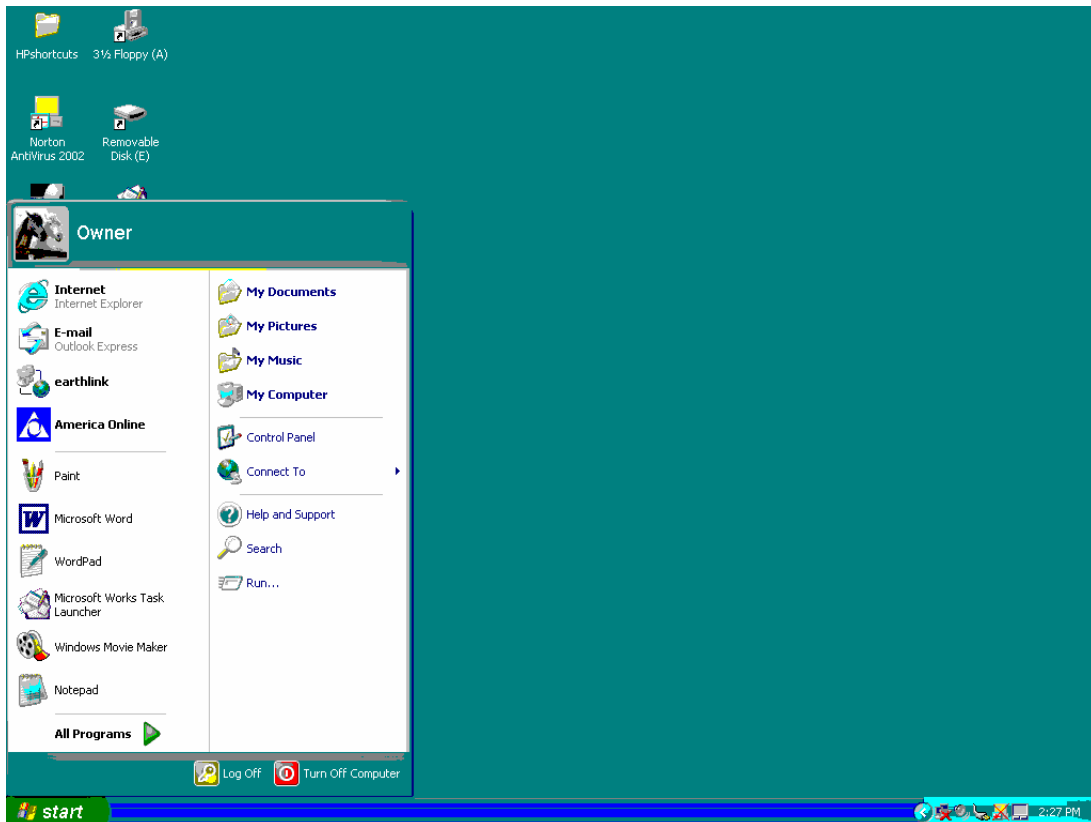
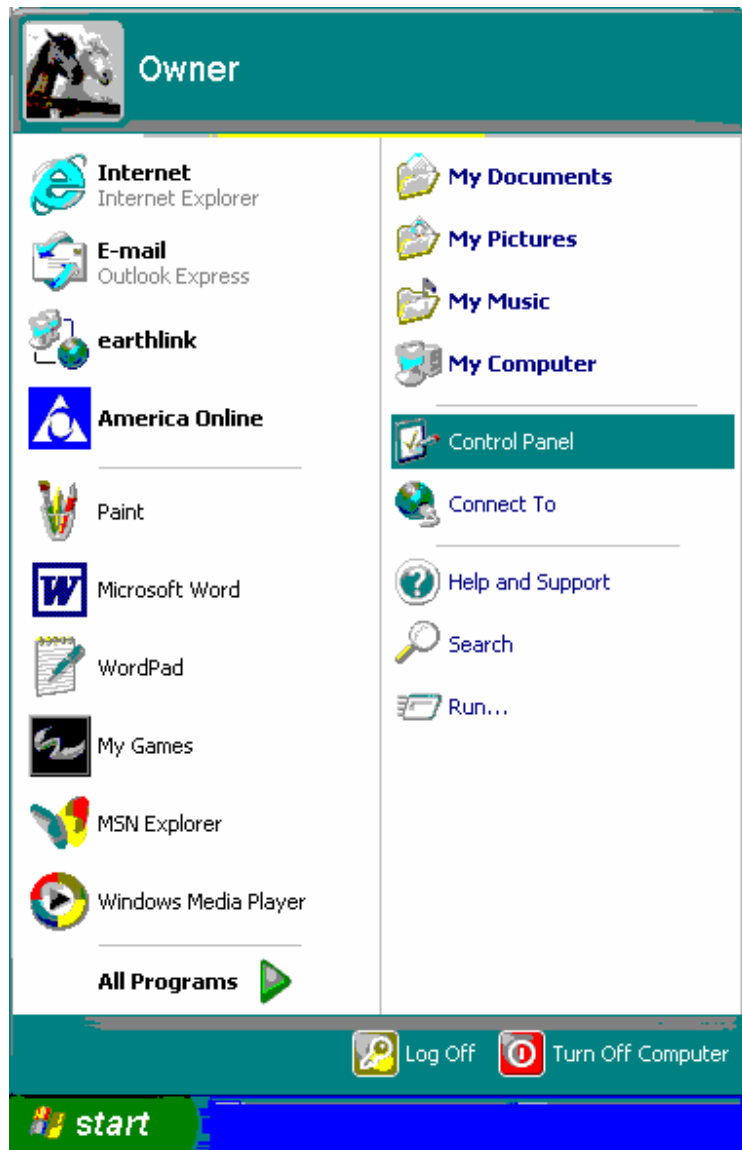


Figure C.1 Start menu and WindowsXP desktop

You can change the display settings in the Control Panel.

- 1 Click the **Start** button on the taskbar and move the mouse pointer and to the right to **Control Panel** and click (see Figure C.2).

## Appendix C: Set Windows XP to Classic Mode



**Figure C.2 Start menu with Control Panel selected**

The Control Panel window opens (see Figure C.3).

## Appendix C: Set Windows XP to Classic Mode

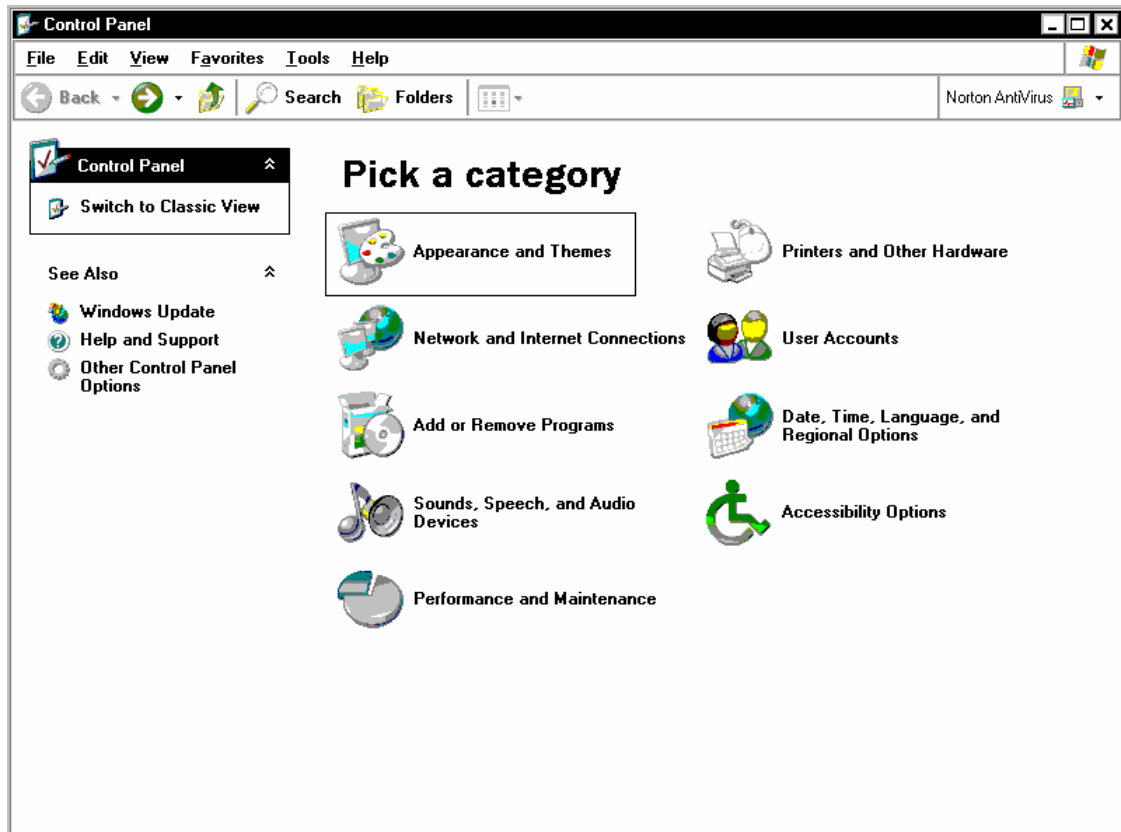


Figure C.3 Control Panel window

- 2 Click the category **Appearance and Themes** below Pick a category (see Figure C.3).  
The Appearance and Themes window opens (see Figure C.4).

## Appendix C: Set Windows XP to Classic Mode

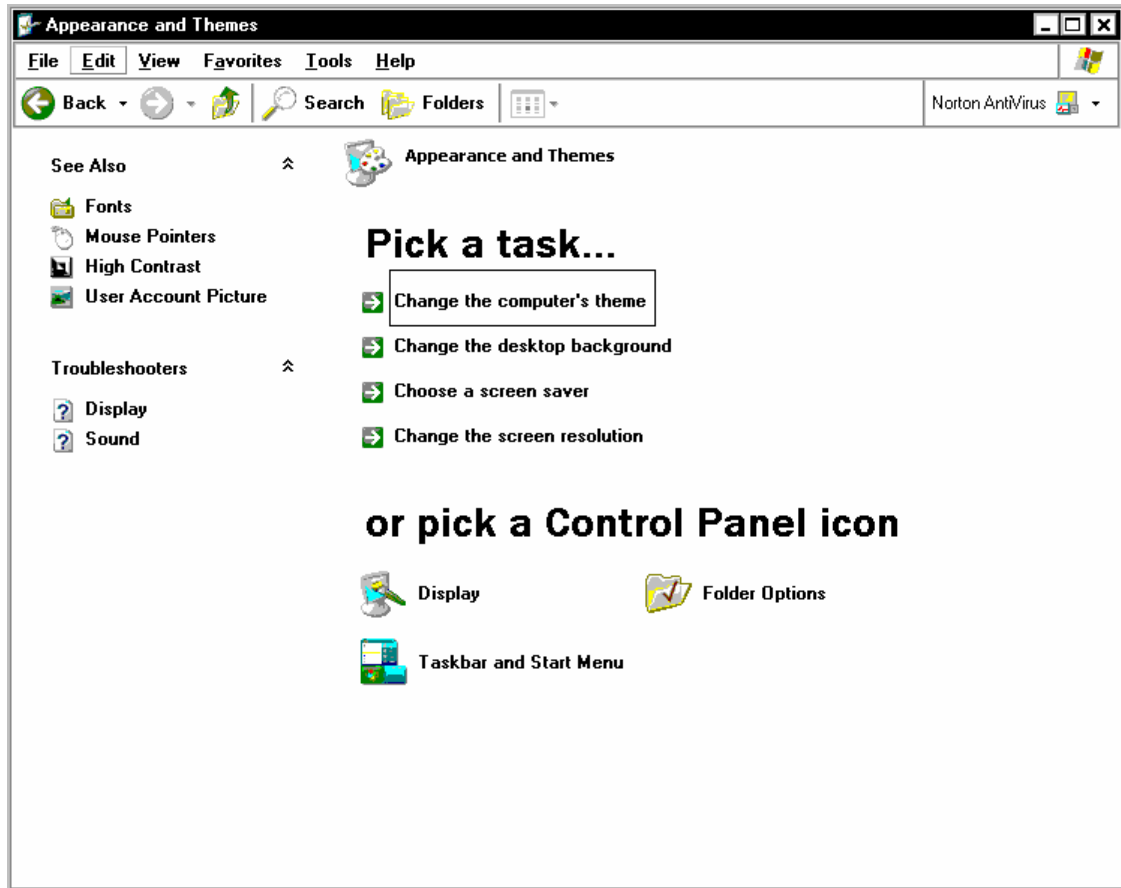


Figure C.4 Appearance and Themes window

- 3 In the Pick a task section, click the top item, **Change the computer's theme**. The Display Properties dialog box appears (see Figure C.5).

## Appendix C: Set Windows XP to Classic Mode

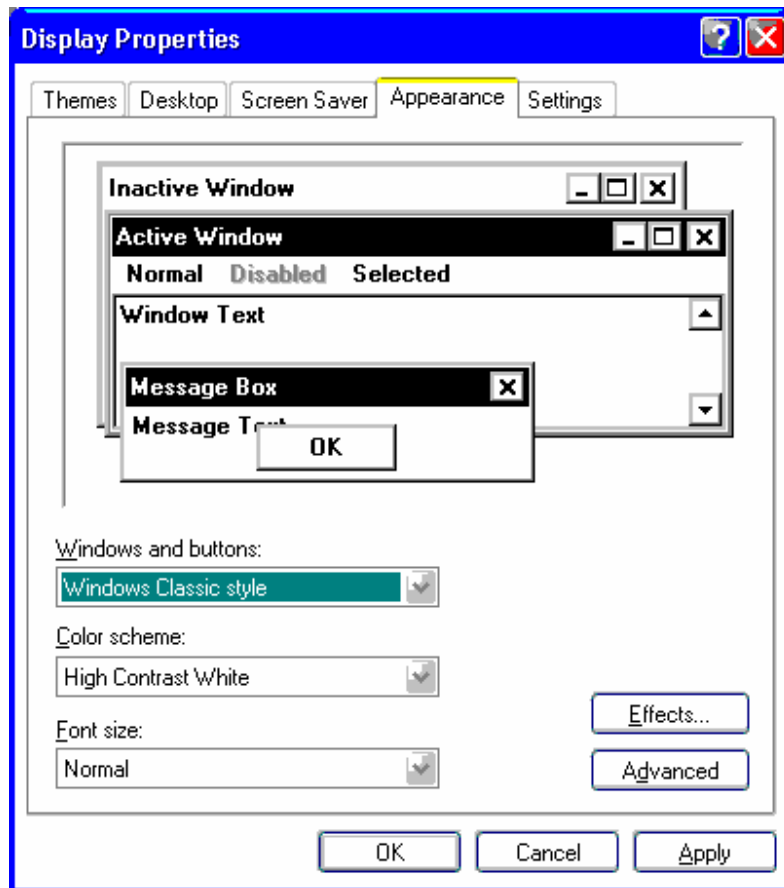


Figure C.5 Display Properties dialog box

- 4 Click the **Appearance** tab near the top of the dialog box.
- 5 Click the arrow on the **Windows and buttons** list box and click **Windows Classic** style.
- 6 Click the **Apply** button to apply your selection.
- 7 On your own computer, you may wish to adjust the Color scheme to a setting that is easy on your eyes. Click the arrow on the **Color scheme** list box and click the style you want. We have chosen **High Contrast White**.
- 8 Click the **Apply** button to apply your selection.
- 9 Click the **OK** button to close the dialog box.

## Appendix C: Set Windows XP to Classic Mode

- 10 Click the **X** button on the title bar of the Appearance and Themes window to close it.  
There are some changes to the look of the Start menu and desktop (see Figure C.6).

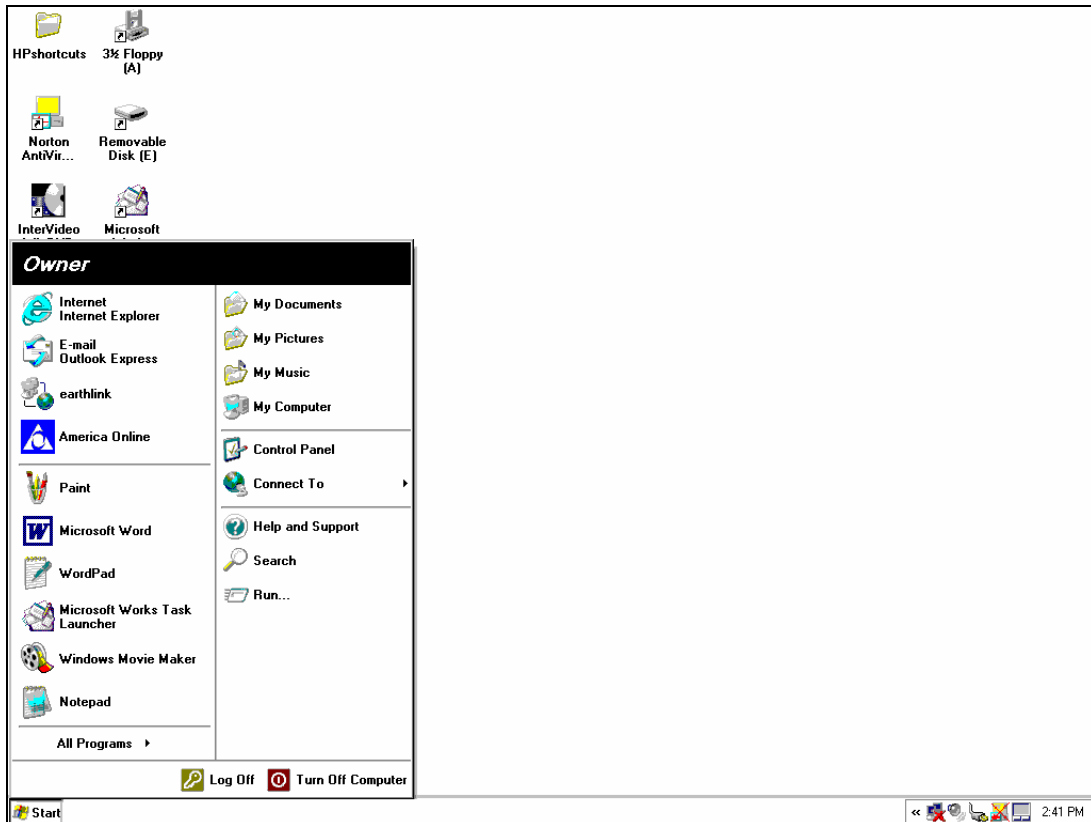


Figure C.6 Start menu and Windows desktop in Classic Style Appearance and Theme

### Change the Start menu

You can also elect to change the Start menu to be organized like Windows 98.

*Note:* We have not changed the Start menu for the exercises in this course. If you do change the menu to be organized like the Windows 98 Start menu, the steps in this manual will differ somewhat from what you see but you should be able to complete all exercises with minor adjustments.

- 1 Right-click the **Start** button on the taskbar.  
A pop-up menu appears (see Figure C.7).

## Appendix C: Set Windows XP to Classic Mode



Figure C.7 Start button pop-up menu

- 2 Click **Properties**.  
The Taskbar and Start Menu Properties dialog box appears (see Figure C.8).

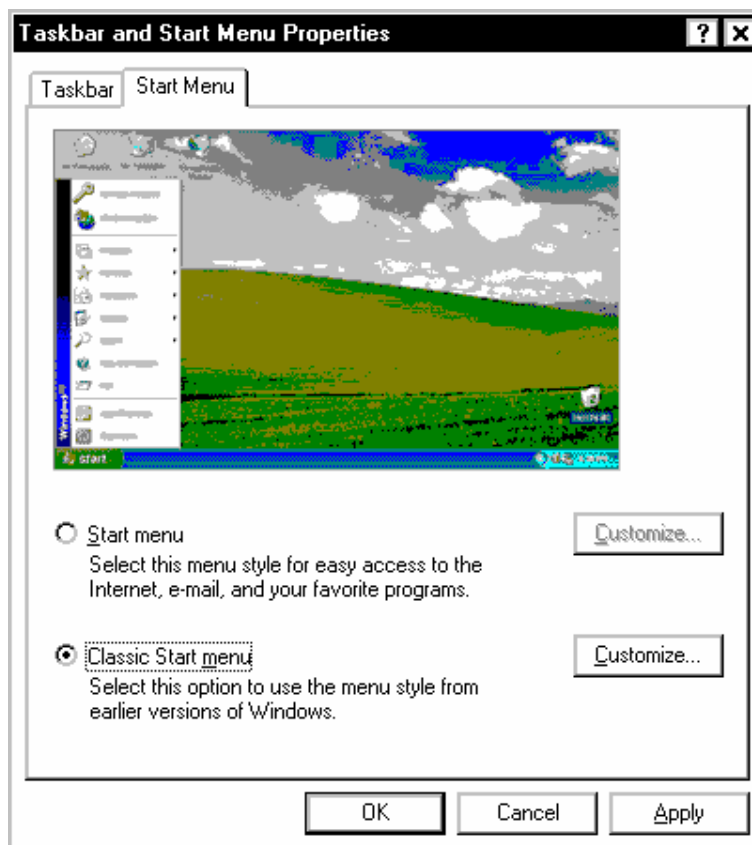


Figure C.8 Taskbar and Start Menu Properties dialog box

- 3 Click the **Start menu** tab (see Figure C.8).

## Appendix C: Set Windows XP to Classic Mode

- 4 Click the radio button next to **Classic Start Menu** (see Figure C.8).
- 5 Click the **OK** button.  
The dialog box closes.
- 6 Click the **Start** button to see that the Classic Start menu is used (see Figure C.9).

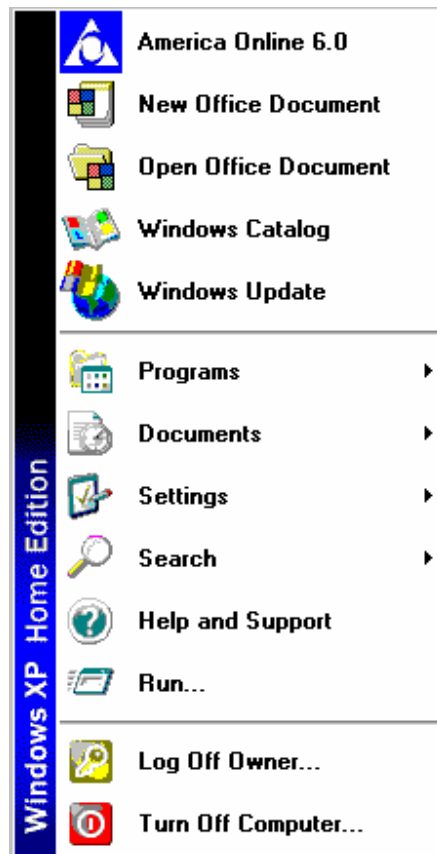


Figure C.9 Classic start menu

The Control Panel is in the Settings menu. The Classic Start menu also places some additional icons on the desktop such as the My Computer icon. You reach My Computer by double-clicking the desktop icon rather than opening a menu item as you do in the Windows XP start menu.

## Appendix C: Set Windows XP to Classic Mode

*Note:* If you prefer the style of the Windows XP menu, repeat steps **1-4** and click the radio button next to **Start menu**.

The lessons in this course are based on the Windows XP (Start Menu) setting.